

Home learning

at St Ninian's High School



Should the school buildings be forced to close, school will initiate home learning. Home learning means that students will follow their school timetable BUT from home. The work will be set digitally via our learning platform which is called Google Classroom. All of our teachers and students are very familiar with using this platform. On each working day;

Teachers will: Set work during lesson times, be online during the lesson to help with queries, mark and give feedback as they normally would during school.

Students will 'attend' their classes. Access the work set and engage with the lesson activities during the lesson time.

Parents will ensure that students are in attendance and are completing and returning (when requested) their classwork.

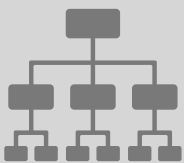
Home Learning recommendations



Maintain a routine in the form of the usual school timetable



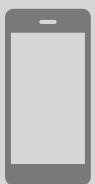
Have a dedicated workspace, preferably not in a bedroom



Be organised ready with all of your required materials 5 mins before the start of each lesson



Talk to your child/children about their learning. Home learning is difficult for everyone involved. Your children WILL need your support



If you have any worries or concerns about your child or home learning do not hesitate to contact school through the usual channels



Home learning is tough. At the end of the school day ensure that your child engages in other activities in order to relax.