



it starts  
*here*

A guide for parents and carers

# Welcome



## A warm welcome to St. Ninian's High School

We want every one of our young people to be happy, confident and successful.

All students are encouraged to develop as individuals and members of our community

during their time with us.

We will do everything we can to ensure each child has the support and guidance they need to enjoy and make the most of the exciting opportunities and experiences that lie ahead.

A handwritten signature in blue ink, appearing to read 'C. Coole'.

Mr C. Coole  
Head Teacher



## Welcome to Lower School.

It is my pleasure to welcome you to the community of St. Ninian's High School as your child begins their secondary school journey. We are proud to see our Lower School site being utilised by our partner primary schools to host events

and we welcome primary staff and students on a regular basis for a range of transition activities.

When your child joins us at St. Ninian's High School, we aim to provide them with an environment where they can

flourish academically, physically and socially. We want each student to become confident and respectful learners by providing them with opportunities to develop the skills and qualities they require in the future. We can only achieve this if we work together with parents and students as a team. To nurture successful students, education has to be a partnership and as such we are very much looking forward to working with you over the coming years.

A handwritten signature in blue ink, appearing to read 'J. White'.

Miss J. White  
Deputy Head Teacher



# Ethos and Values

## MISSION STATEMENT:

Empowering our students to become self-motivated and confident learners who have respect for others and clear aspirations for their future success.

## OUR AIMS

- Every student is empowered to take responsibility for their own learning and decision-making
- Every student leaves with clear aspirations for their own future success
- Every student has developed the skills and dispositions to be life-long learners, make a positive contribution to society and be an active and engaged citizen
- Every student shows care and respect for themselves, others, their community and the environment

## OUR CORE VALUES



### RESPECT:

"Have due regard for the feelings, wishes, or rights of others."

The foundations for success at St. Ninian's High School have always been built on the positive relationships and mutual respect shown between students, staff, parents and governors. Diversity is valued and everyone is also encouraged to respect their community and environment, be that at school, island or global scale.



### ASPIRE:

"Direct one's hopes or ambitions towards achieving something. All at St. Ninian's High School aspire to be the best they can be."

The school rewards hard work, dedication and progress. Students are also given opportunities to look ahead, plan for the future, and are guided to select the most appropriate pathway to enable them to maximise their success.



### EMPOWER:

"Make stronger more confident and a great sense of agency in their life, understanding their rights and responsibilities"

Students are empowered to think for themselves, make decisions and take responsibility for their own learning and future. They are encouraged to think about how they learn best and develop their own skills and strategies to help them learn and grow as people.





# Curriculum

Our aim is to provide a diverse range of relevant and stimulating experiences so that all students are motivated, empowered and challenged to learn. We want our students to learn for life and recognise that life is about learning.

Our curriculum consists of a wide range of experiences, these include:

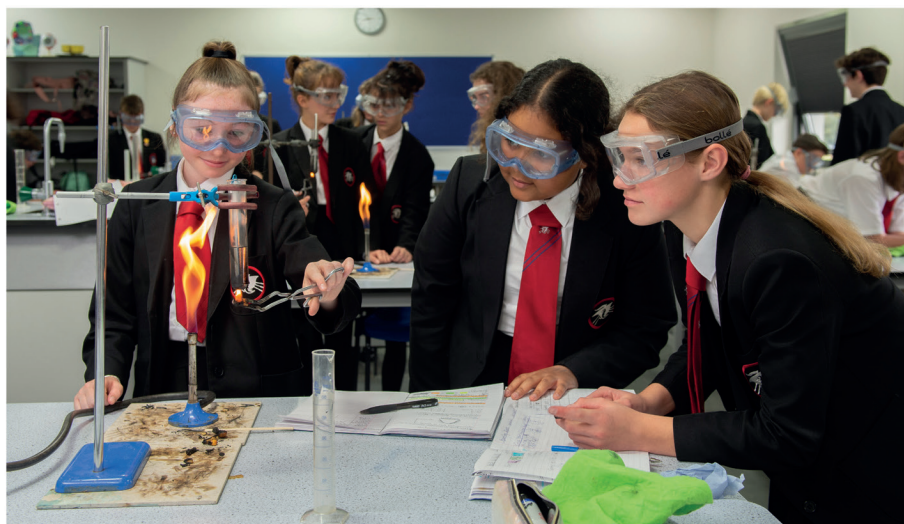
- Weekly timetabled lessons (mostly based on traditional subject areas)
- A dedicated tutorial period, including regular year group assemblies
- Occasional 'drop down days' (where the normal timetable is suspended) to provide additional sessions that focus on developing life skills, employability skills, social skills and wider issues
- Optional enrichment opportunities that are layered over the timetable before and after school, to help students develop a wide range of additional skills; their health and well being; their view of the world

St. Ninian's offers a wide range of subjects at Lower School. Most students throughout KS3 will study all of the following:

- |             |                       |
|-------------|-----------------------|
| • Art       | • Mathematics         |
| • Computing | • Music               |
| • PSHE      | • Physical Education  |
| • Drama     | • Religious Education |
| • English   | • Science             |
| • French    | • Spanish             |
| • Geography | • Technology          |
| • History   |                       |

You can find additional information about topics covered within the Key Stage 3 curriculum on the school website.

There are also many extra-curricular clubs and activities that students can get involved in at lunchtimes and after school.



# Support for students

## Structure

The following structure illustrates the management and pastoral leadership within the Lower School.

### Head Teacher:

Mr C. Coole

### Deputy Head Teacher with responsibility for Lower School:

Miss J. White

### Assistant Head Teachers: based at Lower School

Mrs G. Higgins, Mr N. Dyson, Miss A. Lewis

### Pastoral Leaders:

Mr J. Cretney, Mrs R. Gelling, Miss S. Sinclair

## Pastoral Care and Support

At St. Ninian's High School there is a strong pastoral and curriculum support system. Students have a form tutor and head of year who they should talk to if they have any worries or concerns.

Communication is key to effectively supporting students. We therefore encourage parents to contact the form tutor in the first instance if they have any questions or concerns regarding their child.

The school is fully committed to supporting and helping students achieve success. Parents play a key role in this process by monitoring and ensuring independent learning is completed on time.

As part of our pastoral team committed to pupil wellbeing, there is a team of non-teaching pastoral support staff permanently on site. At Lower School the Pastoral Support Office is located opposite the main entrance and provides a point of contact for students throughout the school day.

The pastoral support staff help students manage any concerns that may arise and offer a variety of opportunities for students to reflect upon their varying experiences.

## Inclusion

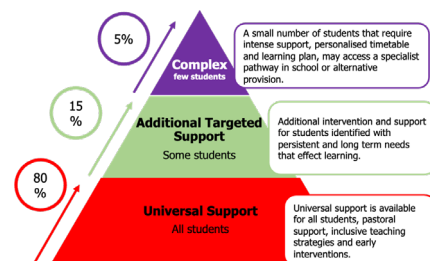
Our school aims to create a sense of belonging by welcoming everyone, providing a wide range of opportunities, ensuring learning is accessible and valuing diversity and difference.

We do this by:

- Understanding and recognising the strengths and needs of all the students in our community
- Providing curriculum pathways and experiences to help all our students to progress and succeed
- Adapting the way we teach to bring the best out of all our students
- Safeguarding all our students by building strong relationships, instilling high expectations and developing skills for life
- Supporting those who need more help and advocating for the most vulnerable

## Progress Zone

Our Progress Zone approach is needs led and graduated so our provision and interventions are responsive to the needs of our learners.



## Tutor Group Structure

From experience we have found that the most effective and cohesive tutor groups are created when a diverse mix of students are brought together. As friendships readily change when students from different schools meet, we do not prioritise previous friendships when putting tutor groups together. Students within our groups are an even mix of gender, ability and primary school. In the selection process we aim to put learning relationships at the heart of our decision-making. Students are encouraged to meet old friends and make new ones during social times.



# School uniform and equipment

## Hair

Hairstyles should not be extreme. Hair may be coloured in natural shades/tones but no creative block or contrasting/vivid colours. If in doubt, please contact the school in advance. Hair accessories must be discreet.

## Jewellery

Ideally no jewellery will be worn, but is limited to:

- A watch (Fitbit or similar)
- A pair of plain stud earrings
- A ring
- A single fine plain neck-chain
- A single fine plain bracelet

Whilst ears may be pierced and appropriate studs worn, all other piercings are not allowed for students in Year 7, 8 or 9. Students in Year 10 and 11 are permitted to wear one small nose stud but other facial or body piercings are still not allowed.

Students are expected to remove any jewellery during activities when it might constitute a risk to the health and safety of a student, member of staff or guest to the school.

## Essential Equipment

- School bag - make it easily identifiable by choosing a bright colour or using a keyring or similar
- Separate bag for PE kit
- Pencil case, pens, pencils, ruler, rubber, pencil sharpener and highlighters
- Maths equipment - compass, protractor, set square and scientific calculator

## Makeup

Minimal and natural looking makeup is allowed, but not encouraged.

## Nail Polish

Only clear colourless nail polish may be worn. Acrylic false nails or reinforced nail polish (gel, shellac or similar finishes) are not allowed.

## Uniform

- White shirt or blouse with shirt collar and school tie
- Grey or black tailored full length trousers or a pleated skirt of appropriate length. Short, tight skirts are not appropriate for school
- Or grey or black tailored shorts (not sports shorts)

- Black blazer with logo
- Grey v-neck jumper (optional with blazer - not instead of a blazer)
- Plain black, grey or white socks; plain black, grey or flesh coloured tights
- Plain black footwear (no coloured logos, flashes, laces, tabs, ankle straps, metal or coloured trimmings)
- Outdoor coats should be removed once inside the school building

## Games/P.E. Kit - all items must be a change from school uniform

- Short sleeved plain red t-shirt or polo shirt.
- School Red/blue games top (football/rugby)
- Plain red hooded top (outdoor)
- Plain royal blue shorts or plain royal blue skort or black leggings
- Short white socks (PE)
- Long royal blue socks (Games)
- Clean training shoes
- Astro shoes (optional)
- Studded boots (moulded studs for football/rugby)
- Towel

The only items of school uniform that must have the school badge/logo are the school tie, blazer badges are optional. Blazer badges and school ties can be purchased from the School Offices.

School logos on PE/Games kit is optional.

Bespoke uniform items can be purchased locally from:

Promenade T Shirts, Queens Promenade, Douglas: hooded tops, polo shirts, school blazer & school jumpers only.



# School information



## THE SCHOOL DAY

PRE-SCHOOL	8.10 am	School site opens	Students can access the site
	8.15 am	Pre-school activities commence	Canteen Open Supervised Study Spaces open Pastoral Support available Appeals Desk opens
COMPULSORY SCHOOL DAY	8.45 am	Formal start to the school day	
	8.50 am	Lesson 1	Learning Lesson Time
	9.40 am	Lesson 2	Learning Lesson Time
	10.30 am	MORNING BREAK	SOCIAL TIME- Canteen opens
	10.50 am	Lesson 3	Learning Lesson Time
	11.40 am	Lesson 4	Learning Lesson Time
	12.30 pm	LUNCH	SOCIAL TIME - Canteen opens
	1.20 pm	Lesson 5	Learning Lesson Time
	2.10 pm	Lesson 6	Learning Lesson Time
	3.00 pm	End of compulsory School Day	School buses depart
EXTENDED ENRICHMENT OPPORTUNITIES	3.10 pm	Extended Opportunities begin	Supervised Study Spaces Enrichment clubs & activities Subject-based study sessions School sports fixtures
	4.00 pm	Extended Opportunities end	Students can still use bus cards for service buses

## Lunchtime Arrangements

There is a self-service canteen in both Upper and Lower School where a wide range of excellent food is available. Students may bring their own lunch from home but must eat it in the dining room. Payment for food and drinks in the dining room is made via pre-paid cards. These must be loaded with cash on one of the machines in the school entrance hall or using our online payment service. Students will be issued with a lunch card when they arrive at the school. It is their responsibility to ensure that there is enough money on the card to pay for their meals. Students entitled to free school meals will have their cards automatically credited with their daily allowance. They can choose to top up their cards with additional cash if required. During breaks and lunchtimes, students at Lower School should remain on site.

## Attendance & Absence

If your child is absent from school for any reason, please telephone the School Office at the earliest opportunity. The Office is open from 8am each day. Please email or send in an absence letter if you wish to inform us in advance of any

planned absence. Where attendance falls below the school average this can indicate that a student may be in need of support. This will be followed up by the Pastoral Team. Students with attendance below 80% may be referred to the Education Welfare Officer for additional support. There is a clear link between attendance and attainment and we would ask for parents to support the need for good attendance and punctuality at school.

## Bus Information

Students who travel to school on the bus will require a 'Go Card' (SCH2) to do so. These are available from the Welcome Centre in Douglas or online via the Isle of Man Transport website. As the safety of our students is a priority, St. Ninian's High School operates a partnership agreement with Bus Vannin and the Isle of Man Constabulary to help to monitor and deal with poor behaviour on the school buses. Use of school transport may be withdrawn for a period of time if a student is involved in repeated incidents of poor behaviour whilst travelling on the bus.



## School Holiday Dates

		2024/2025 (current academic year)	2025/2026
Autumn Term	<b><i>In-service Days (closed to pupils)</i></b>	Monday 2 <sup>nd</sup> September 2024 & Tuesday 3 <sup>rd</sup> September 2024	Monday 1 <sup>st</sup> September 2025 & Tuesday 2 <sup>nd</sup> September 2025
	<b>Open to pupils</b>	Wednesday 4 <sup>th</sup> September 2024	Wednesday 3 <sup>rd</sup> September 2025
	<b>Half Term</b>	Monday 28 <sup>th</sup> October 2024 to Friday 1 <sup>st</sup> November 2024	Monday 27 <sup>th</sup> October 2025 to Friday 31 <sup>st</sup> October 2025
	<b>Close for Christmas</b>	Friday 20 <sup>th</sup> December 2024	Friday 19 <sup>th</sup> December 2025
Spring Term	<b>Open to pupils</b>	Monday 6 <sup>th</sup> January 2025	Monday 5 <sup>th</sup> January 2026
	<b>Half Term</b>	Monday 17 <sup>th</sup> February 2025 to Friday 21 <sup>st</sup> February 2025 <i>Includes 2 days in-service for all schools to be twilighted</i>	Monday 16 <sup>th</sup> February 2026 to Friday 20 <sup>th</sup> February 2026 <i>Includes 2 days in-service for all schools to be twilighted</i>
	<b>Close for Easter</b>	Friday 4 <sup>th</sup> April 2025	Thursday 2 <sup>nd</sup> April 2026
	<b>Open to pupils</b>	Tuesday 22 <sup>nd</sup> April 2025	Monday 20 <sup>th</sup> April 2026
Summer Term	<b>Bank Holiday</b>	Monday 5 <sup>th</sup> May 2025	Monday 4 <sup>th</sup> May 2026
	<b>Bank Holiday</b>	Monday 26 <sup>th</sup> May 2025	Monday 25 <sup>th</sup> May 2026
	<b><i>In-service Day (closed to pupils)</i></b>	Friday 30 <sup>th</sup> May 2025	Friday 22 <sup>nd</sup> May 2026
	<b>Half term (TT)</b>	Monday 2 <sup>nd</sup> June 2025 to Friday 6 <sup>th</sup> June 2025	Tuesday 26 <sup>th</sup> May 2026 to Friday 5 <sup>th</sup> June 2026
	<b>Tynwald Day</b>	Monday 7 <sup>th</sup> July 2025	Monday 6 <sup>th</sup> July 2026
	<b>Close for Summer</b>	Friday 18 <sup>th</sup> July 2025	Thursday 23 <sup>rd</sup> July 2026
		188 pupil days 5 in service days *2 days for teachers' professional development	188 pupil days 5 in service days *2 days for teachers' professional development

\*Two days for teachers to invest in their own professional development which can be utilised at any point in the academic year outside of the school session times at a time and a place of their choosing.

- In respect of Southern Schools, there may be a deviation in the holiday dates to accommodate the Southern 100 in July.
- Please note that all holidays are subject to IOM Government Bank Holidays and TT Festival dates being released, therefore dates may be subject to change.



## Service 41



Royal Avenue - St Ninians High School

**AM**

Mondays to Fridays (School days Only)

Promenade, Esplanade Lane	0805
Royal Avenue, glen entrance	0810
Birch Hill, shop <b>u</b> only for Upper School	0817
Heywood Park - for Lower Sch	0821
Victoria Road, Centre House	0827
Somerset Road - Upper School	0835

St Ninians High School - Royal Avenue

**PM**

Mondays to Fridays (School Days only)

Upper School, Somerset Road	1505
Glencrutchery Road	1508
Avondale Road, Village Walk	1512
Birch Hill, shop <b>u</b>	1516
Lower School, stop B2	1522
Royal Avenue	1528
Queens Promenade	1533
Central Promenade, Esplanade	1536

**Last stop**

### Service 41 route AM

Central Promenade	Somerset Road, Upper School
Queens Promenade	Glencrutchery Road
Port Jack	Avondale Road
Royal Avenue	Birch Hill <b>u</b>
Avondale Road	Lower School
Birch Hill <b>u</b>	no stops on H'berry/A'dale Road
Heywood Park stop	Royal Avenue
Victoria Road	Port Jack
York Road	Queens Promenade
Somerset Road	Central Promenade

**u** - Operates in reverse direction in Birch Hill -  
stopping opposite the normal stops

from September 2024

## Service 42



Windermere/Ballachrink - St Ninians High School

**AM**

Mondays to Fridays (School days Only)

Eskdale Road	0745
Windermere Drive	0750
Ballachrink, shop	0755
Lower School	0805
Hillberry/Avondale Road pick ups only after Lower School set down	
Avondale Road, Village Walk	0810
Glencrutchery Road	0823
Somerset Road - St Marys	0830

St Ninians High School - Ballachrink/Windermere

**PM**

Mondays to Fridays (School Days only)

Upper School, Somerset Road	1505
Johnny Watterson Lane	1510
Hailwood Avenue	1513
Lower School, stop B3	1519
no stops on Hillberry Road	
Avondale Road, Village Walk	1523
Ballachrink, shop	1528
Windermere Drive	1535
Queens Promenade	1543
Central Promenade, Esplanade	1546

**Last stop**

### Service 42 route AM

Eskdale Road	Somerset Road, Upper School
Windermere Drive	Johnny Watterson Lane
Ballachrink	Hailwood Avenue
Lower School	Lower School
Hillberry Road	Avondale Road
Governors Road	Ballachrink
Glencrutchery Road	Windermere Drive
Somerset Road	Eskdale Road
	Port Jack
	Queens Promenade
	Central Promenade

from September 2024

## Service 44



Laxey - St Ninians High School

**AM**

Mondays to Fridays (School days Only)

Dhoon Glen, café	0740
Minorca, shelter	0744
Opposite Ard Reayrt	0746
Laxey, MER	0750
Fairy Cottage	0752
Ballacannell	0753
Baldrine	0757
Heywood Park - for Lower Sch	0808
Hailwood Avenue	0813
Willaston School, shelter	0819
Somerset Road - St Marys	0825

St Ninians High School - Laxey

**PM**

Mondays to Fridays (School Days only)

Somerset Road - Upper School	1505
Lower School, stop B1	1518
Ballacannell	1533
Laxey, MER	1539
Minorca	1541

Service 44 route	AM	Service 44 route	PM
Dhoon Glen		Somerset Road, Upper School	
Minorca		Lower School	
Laxey		Whitebridge	
Fairy Cottage		Baldrine	
Ballacannell		Ballacannell	
Baldrine, layby		Fairy Cottage	
Hillberry Road		Laxey	
Hailwood Avenue		Minorca	
Willaston, Snaefell Road		Dhoon Glen	
Willaston, Tynwald Road			
Ballanard Road		(note no set downs between	
Somerset Road		Lower School and Whitebridge)	

from September 2024

## Service 22/25b



Lower Douglas - St Ninians High School (Lower only)

**AM**

Mondays to Fridays (School days Only)

Lord Street - Stop D	0815	(Service 25b)
Rosemount	0819	
Victoria Road, Tesco	0825	
Lower School	0835	

St Ninians High School (Lower only) - Lower Douglas

**PM**

Mondays to Fridays (School Days only)

Lower School, stop B3	1516	(Service 22)
Victoria Road, Centre House	1528	
Rosemount	1535	
Lord Street	1542	

Service 25b route	AM	Service 22 route	PM
Lord Street bus interchange		Lower School	
Rosemount		Governors Road	
York Road		Victoria Road	
Victoria Road		York Road	
Governors Road		Rosemount	
Lower School		Lord Street bus interchange	

from September 2024

## Service 33



Anagh Coar/Farmhill - St Ninians High School

**AM**

Mondays to Fridays (School days Only)

Anagh Coar, 1st stop	0740
Farmhill, Manor Road	0747
Anagh Coar, last stop	0742
Springfield Road	0755
Heather Crescent	0756
Somerset Road - Upper School	0813
Willaston, shops	0818
Lower School	0835

Ballakermeen High School - Spring Valley

**PM**

Mondays to Fridays (School Days only)

Lower School, stop B2	1523
no stops between schools	
Somerset Road - St Marys	1533
Woodbourne Road, York Road	1535
Circular Road	1539
Heather Crescent	1545
Springfield Road	1546
Anagh Coar, 1st stop	1548
Farmhill, shop	1550
Vicarage Road, Heather View	1552
Stevenson Way	1554
Anagh Coar, last stop	1559
Harcroft Meadows	1602

Service 33 route	AM	Service 33 route	PM
Anagh Coar		Lower School	
Farmhill		Somerset Road, St Marys	
Anagh Coar		Bucks Road	
Springfield Road		Circular Road	
Heather & Hazel Crescents		Heather & Hazel Crescents	
Somerset Road, Upper School		Springfield Road	
Willaston, Keppel Road		Anagh Coar	
Hailwood Avenue		Farmhill	
Lower School		Harcroft Meadows	

from September 2024

## Service 45



Strang & Union Mills - St Ninians High School

**AM**

Mondays to Fridays (School days Only)

Cronk Griannagh	0741
Mount Rule, Ballamilligan	0746
Strang, Mount Rule Road	0749
Snugborough	0752
Cronkbourn	0758
Somerset Road - St Marys	0807
Lower School	0821

St Ninians High School - Strang & Union Mills

**PM**

Mondays to Fridays (School Days only)

Lower School, stop B1	1523
no stops between schools	
Somerset Road - St Marys	1533
Braddan School	1541
Strang	1545
Mount Rule, Ballamilligan	1552
Snugborough, shelter	1559

Service 45 route	AM	Service 45 route	PM
Cronk Griannagh		Lower School	
Ballamilligan Estate		Somerset Road, St Marys	
Strang Road		Braddan School	
Snugborough		Ballamilligan Estate	
Braddan School Road		Strang crossroads	
Cronkbourn		Strang Road	
Somerset Road for Upper Sch		Union Mills	
Lower School		Snugborough	

from September 2024

## Service 42/44



### Hailwood Avenue - St Ninians High School (Upper)

Mondays to Fridays (School days Only)

Hailwood Ave, school layby	0813
Willaston School, shelter	0819
Somerset Road - St Marys	0825

### St Ninians High School (Upper) - Hailwood Avenue

**PM** - on Service 42

Mondays to Fridays (School Days only)

Upper School, Somerset Road	1505	(Service 42)
Johnny Watterson Lane	1510	(Service 42)
Hailwood Avenue	1513	(Service 42)

Service 44 route	AM	Service 42 route	PM
Hailwood Avenue		Somerset Road, Upper School	
Willaston, Snaefell Road		Johnny Watterson Lane	
Willaston, Tynwald Road		Hailwood Avenue	
Ballanard Road			
Somerset Road			

## Service 29



### Port Soderick - St Ninians High School (Upper only)

**AM**

Mondays to Fridays (School days Only)

Quines Hill	0816
Port Soderick, upper car park	0819
White Hoe	0826
Loch Promenade Stop F	0835
Harris Prom, Gaiety Theatre	0838
Somerset Road - St Marys	0841

### St Ninians High School (Upper only) - Port Soderick

**PM**

Mondays to Fridays (School Days only)

Somerset Road - St Marys	1533
Lord Street - Stop A	1550
White Hoe	1555
Port Soderick	1601

Service 29 route	AM	Service 29 route	PM
Quines Hill		Somerset Road	
Port Soderick, upper car park		Ballakermeen School	
Keristal		Harris Promenade	
White Hoe		Loch Promenade	
Lord Street bus interchange		Lord Street bus interchange	
Loch Promenade		White Hoe	
Harris Promenade		Quines Hill	
Ballaquayle Road		Port Soderick	
Somerset Road			



Service 5/6a



Peel - St Ninians High School

AM

Mondays to Fridays (School days Only)		
Peel Town Hall	0730	(Service 6a)
St Johns, Tynwald Inn	0738	
Crosby crossroads	0748	
Strang	0755	
Douglas, Victoria Street	0810	
Douglas, Lord Street Stop D	0820	(Service 12a)
St Ninians, Ballaquayle Road	0828	(Service 12a)
Birch Hill Crescent, 1st stop	0839	(Service 12a)

St Ninians High School - Peel

PM

Mondays to Fridays (School Days only)		
Lower School		
Lower School, stop B3	1516	(Service 22 to Lord St)
Lord Street	1542	
Upper School		
Somerset Road - St Marys	1533	(Service 29 to Lord St)
Lord Street - Stop B	1607	(Service 5)
St Johns	1636	
Peel Town Hall	1643	

Service 3



Lower Douglas - St Ninians High School (Upper only)

AM

Mondays to Fridays (School days Only)			
Lord Street - Stop D	0740	0810	0840
Rosemount	0744	0814	0844
St Ninians, Ballaquayle Road	0748	0818	0848

St Ninians High School (Upper only) - Lower Douglas

PM

Mondays to Fridays (School Days only)	
Ballaquayle Road, layby	1522
Prospect Terrace	1525
Lord Street	1532

Service 3 route AM	Service 3 route PM
Lord Street bus interchange	Ballaquayle Road
Bucks Road	Woodbourne Road
Rosemount	Prospect Terrace
Woodbourne Road	Prospect Hill
Ballaquayle Road	Lord Street bus interchange

Service 6a route AM	Service 5 route PM
Peel Town Hall	Lord Street bus interchange
St Johns	Peel Road
The Hope	Strang
Crosby	Glen Vine
Glen Vine	Crosby
Union Mills	St Johns
Strang	Peel
Quarter Bridge	
Peel Road	
Central Douglas	

## Service 1



Mount Murray - St Ninians High School (Upper only)

**AM**

Mondays to Fridays (School days Only)

Bus arrives from Port Erin	
Mount Murray, shelter	0811
Somerset Road - Upper School	0823

St Ninians High School (Upper only) - Mount Murray

**PM**

Mondays to Fridays (School Days only)

Ballaquayle Road, layby	1522	(Service 3 to Lord St)
Lord Street bus interchange	1550	(Service 2)
Groves Road, opp NSC	1557	
Mount Murray, Knock Froy	1603	
Bus continues to Port Erin		

## Service 11a/12a



Lower Douglas - St Ninians High School

**AM**

Mondays to Fridays (School days Only)

Lord Street - Stop D	0820	(Service 12a)
Rosemount	0824	(Service 12a)
St Ninians, Ballaquayle Road	0828	(Service 12a)
Birch Hill Crescent, 1st stop	0839	(Service 12a)

St Ninians High School - Lower Douglas

**PM**

Mondays to Fridays (School Days only)

Hillberry Road, Heywood Park	1559	(Service 11a)
Ballaquayle Road, layby	1612	(Service 11a)
Prospect Terrace	1615	(Service 11a)
Lord Street	1622	(Service 11a)

Service 1 route	AM	Service 12a route	PM
Newtown		Lord Street bus interchange	
Mount Murray		Pulrose Road	
Richmond Hill		Groves Road	
Alexander Drive		Richmond Hill	
Somerset Road		Mount Murray	
(continues to UCM)		Newtown	

Service 12a route	AM	Service 11a route	PM
Lord Street bus interchange		Hailwood Avenue	
Bucks Road		Ballaquayle Road	
Rosemount		Woodbourne Road	
Woodbourne Road		Prospect Terrace	
Ballaquayle Road		Prospect Hill	
Hailwood Avenue		Lord Street bus interchange	



SNHS.SCH.IM

LOWER SCHOOL (YEARS 7 - 9)  
Heywood Avenue, Onchan,  
Isle of Man, IM3 3AR  
01624 648900

UPPER SCHOOL (YEARS 10 - 13)  
Ballaquayle Road, Douglas,  
Isle of Man, IM2 5RA  
01624 648800

HEAD TEACHER Mr C. J. Coole  
DEPUTY HEAD TEACHERS Miss J. White Mr A. N. Smith  
ASSISTANT HEAD TEACHERS Mrs A. C. Daugherty Mr N. Dyson Mrs A. Neill Mrs G. Higgins Miss A. Lewis  
BURSAR Ms S. M. Shimmin