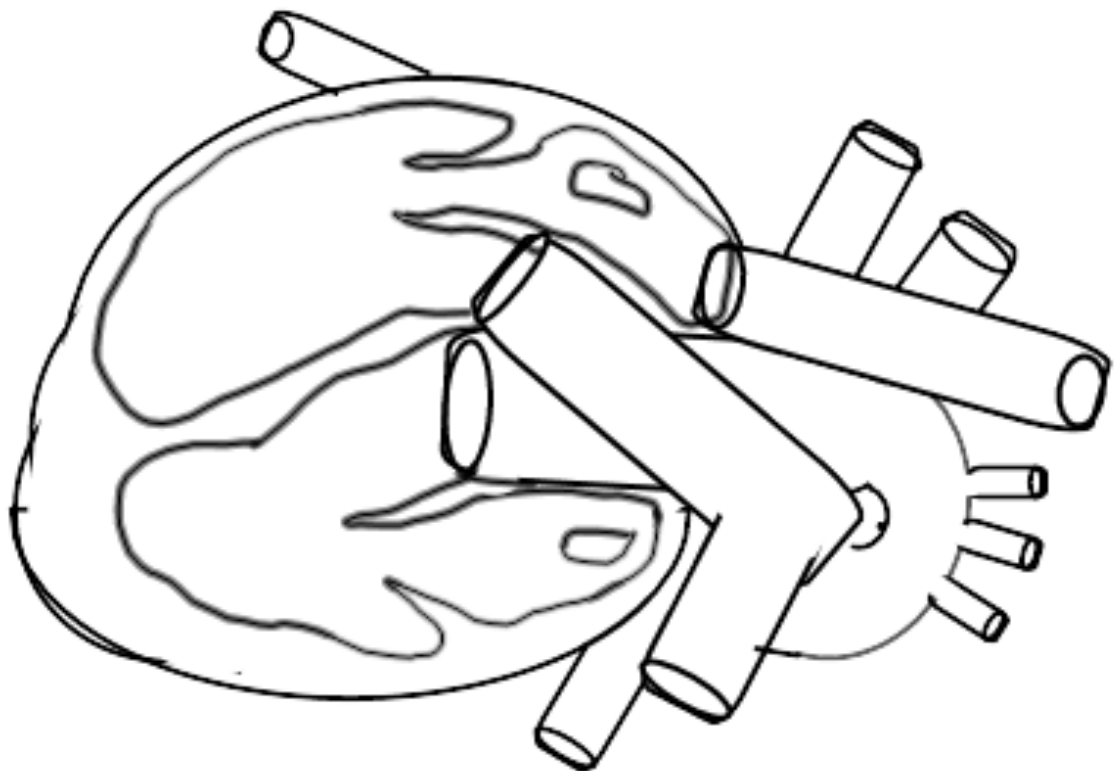
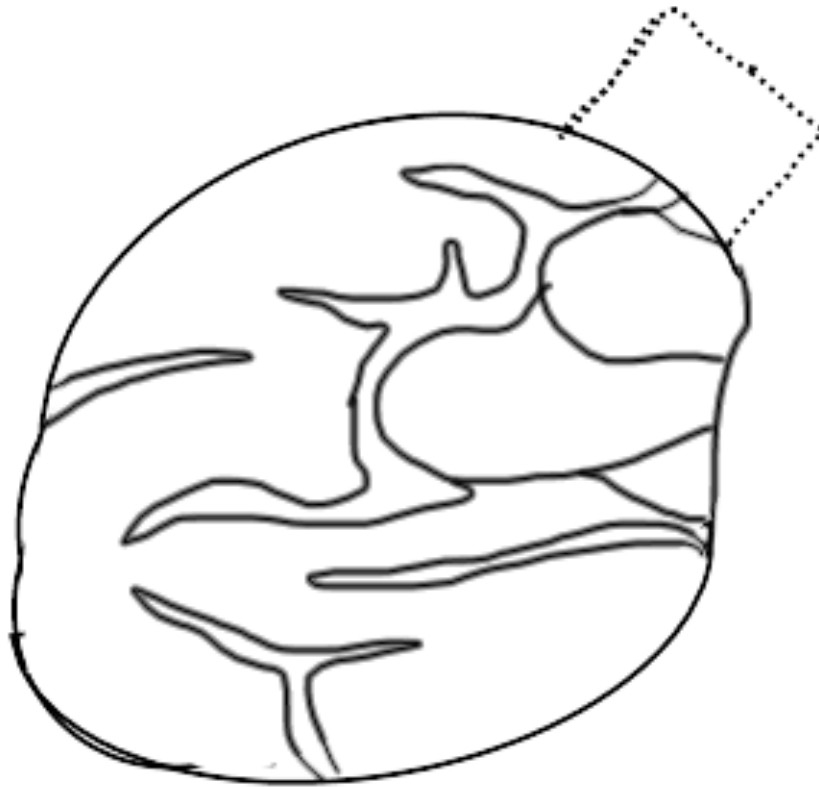
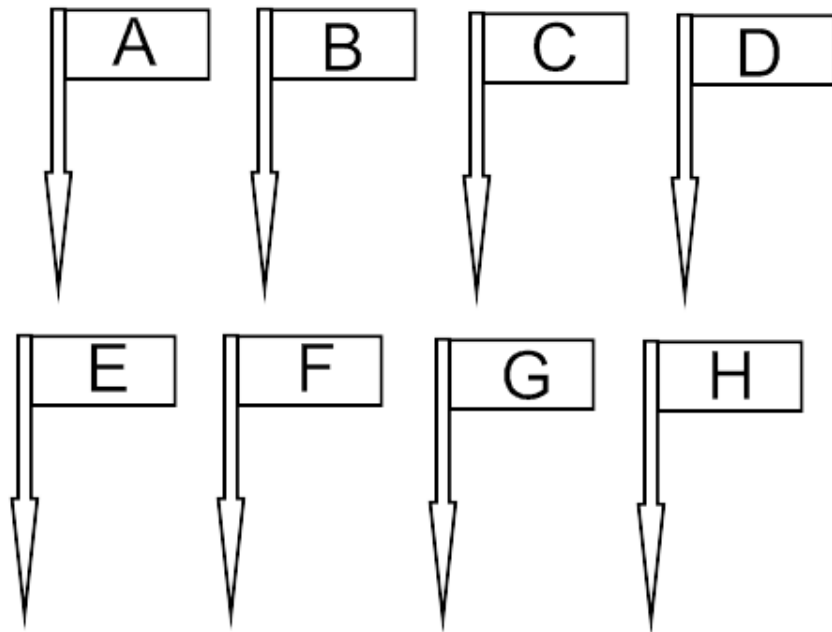


Independent Learning Task

Subject	Science							
ILP #1	Modelling the human heart							
Week set:	Week 5							
Duration:	1 – 2 hours							
Hand in:	Week 7							
Instructions:	<p>Using the attached templates and label pins to create a foldable, interactive model of the human heart.</p> <p>Once you have created your model, research cardiovascular diseases to see how the heart can be affected by disease.</p>							
Skills:	<ul style="list-style-type: none"> Learning key terminology. Developing research skills. Applying creativity to science. 							
Marking schema:	<table border="1" style="width: 100%; border-collapse: collapse; text-align: left;"> <thead> <tr style="background-color: #e0f0e0;"> <th style="width: 33%;">Secure</th> <th style="width: 33%;">Developing</th> <th style="width: 33%;">Excellent</th> </tr> </thead> <tbody> <tr> <td style="vertical-align: top;"> <ul style="list-style-type: none"> - Show you can make a model of the human heart. - Label 4 structures of the heart. </td> <td style="vertical-align: top;"> <ul style="list-style-type: none"> - Show you can make a model of the human heart. - Label all 8 structures of the heart. - Colour oxygenated blood in bright red, and deoxygenated blood in dark red. </td> <td style="vertical-align: top;"> <ul style="list-style-type: none"> - Show you can make a model of the human heart. - Label all 8 structures of the heart. - Colour oxygenated blood in bright red, and deoxygenated blood in dark red. - Research cardiovascular disease and describe how they can affect how the heart functions. </td> </tr> </tbody> </table>		Secure	Developing	Excellent	<ul style="list-style-type: none"> - Show you can make a model of the human heart. - Label 4 structures of the heart. 	<ul style="list-style-type: none"> - Show you can make a model of the human heart. - Label all 8 structures of the heart. - Colour oxygenated blood in bright red, and deoxygenated blood in dark red. 	<ul style="list-style-type: none"> - Show you can make a model of the human heart. - Label all 8 structures of the heart. - Colour oxygenated blood in bright red, and deoxygenated blood in dark red. - Research cardiovascular disease and describe how they can affect how the heart functions.
Secure	Developing	Excellent						
<ul style="list-style-type: none"> - Show you can make a model of the human heart. - Label 4 structures of the heart. 	<ul style="list-style-type: none"> - Show you can make a model of the human heart. - Label all 8 structures of the heart. - Colour oxygenated blood in bright red, and deoxygenated blood in dark red. 	<ul style="list-style-type: none"> - Show you can make a model of the human heart. - Label all 8 structures of the heart. - Colour oxygenated blood in bright red, and deoxygenated blood in dark red. - Research cardiovascular disease and describe how they can affect how the heart functions. 						
Additional guidance or help:	<p>Use the BBC Bitesize link to help you: https://www.bbc.co.uk/bitesize/guides/zw9x8mn/revision/3</p>							





A	Left atrium
B	Left ventricle
C	Right atrium
D	Right ventricle

E	Pulmonary artery
F	Aorta
G	Vena cava
H	Pulmonary vein